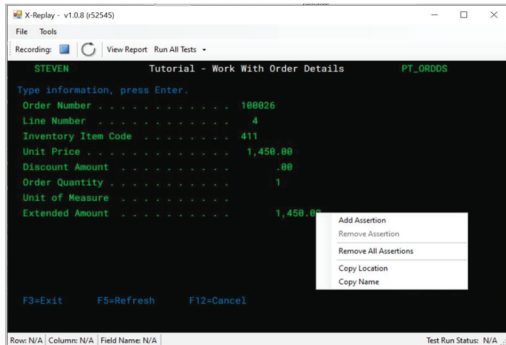
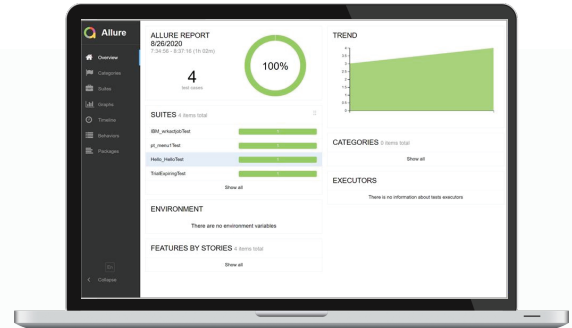


Automated testing of IBM i 5250 screens with visual recording, replay and reporting



Select screen elements to test and automatically generate test scripts that can be stored, modified and re-run as often as necessary. View detailed error reports in a convenient dashboard.



X-Replay is a function-rich 5250 screen testing solution that provides a flexible, highly-automated method of testing your IBM i application UIs during development. X-Replay records interactive test cases, replays them automatically and uses a dashboard to report on whether the results are as expected. The solution automatically produces test scripts that can be modified and re-run as needed. X-Replay easily integrates with X-DataTest, which includes database regression testing and test data management.

Accelerate IBM i UI Testing & Deployment with X-Replay



Improves developer productivity

X-Replay lets developers make interface changes rapidly and with confidence. By providing a solution to quickly and automatically test the UI, X-Replay eliminates manual testing and ensures a thorough, repeatable testing method.



Ensures higher-quality applications

End users, partners and employees all expect a smooth user experience, so developers need to make changes to keep pace with expectations and deliver an intuitive interface. X-Replay ensures high quality no matter the number of modifications.



Resolves problems quickly

X-Replay uncovers and highlights problems automatically, using a convenient dashboard to show exactly where in the code the issue occurred. Developers no longer need to hunt down UI problems through trial and error.



Provides flexibility managing test cases

Test an entire interface, one or more screens or just certain elements in a screen — it's entirely according to developer needs. Modify and re-run tests cases, view issues in the dashboard and easily integrate X-Replay functionality with other testing solutions.

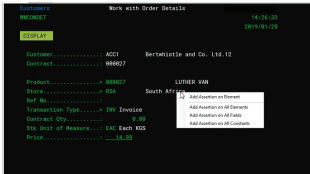
Integration with Fresche's X-DataTest provides an end-to-end testing suite

X-Replay easily integrates with X-DataTest to provide end-to-end testing, including the UI, business logic and the database. X-DataTest prepares test databases, develops test cases, provides regression testing and integrates with IBM's Code Coverage to help test business logic. Together, the solutions form a highly effective IBM i application testing suite.

X-Replay simplifies UI testing through automation:

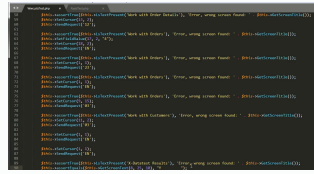
1 Record

Select screen elements to validate and start recording the test.



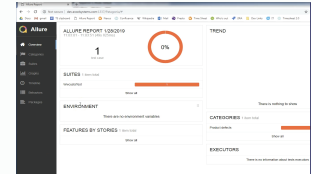
2 Replay

Re-run automatically-produced test script. Modify the script to suit.



3 Report

View the dashboard to find the exact location of issues in the code.



Test as little or as much as you need with automatically-produced, editable test scripts from X-Replay.

Key features



Automatic test recording on IBM i

X-Replay provides everything you need to automatically record highly targeted screen tests:

- Specify which screen elements to test: one, several or all
- Includes intelligent object UI recognition



Test script editor

Automatically-generated test scripts can be edited with while loops and other logic before being re-run:

- Easily repeat tests with successive product IDs
- Automatically run same test with different user privileges



Reporting dashboard

Dashboard provides everything you need to view detailed test results, individually or in aggregate:

- Quickly narrow down the point of failure
- View screen, element and exact line of code causing issue



Test case management

X-Replay helps organize your screen testing efforts with powerful test management functionality:

- Tests stored in folders; interface to rename/schedule/delete
- Ability to integrate with change management systems.



Field names as identifiers

X-Replay uses field names to identify the screen elements that are being tested:

- Less maintenance than coordinates or screen shots
- Tests don't break when elements move on screen



Integration with other testing tools

Integrate with X-Datatest and Code Coverage for a complete end-to-end suite:

- Call X-Datatest with a command from CL or navigation itself
- Returned value can be recognized by the UX

Ready to get started?

For more information, call 1-800-361-6782 or visit www.freschesolutions.com

About Fresche Solutions®

Fresche Solutions is an international vendor of IBM i application modernization and management solutions. With offices in the US, Canada, Europe, Australia and India, Fresche helps IBM i customers attain their business goals by better managing, enhancing and evolving their RPG, COBOL and CA 2E (Synon) application environments.

TMs mentioned are those of Fresche Solutions Inc. or their respective owners.

© MMXX Fresche Solutions Inc.